

\$550,000 - 9232 111 Avenue, Edmonton

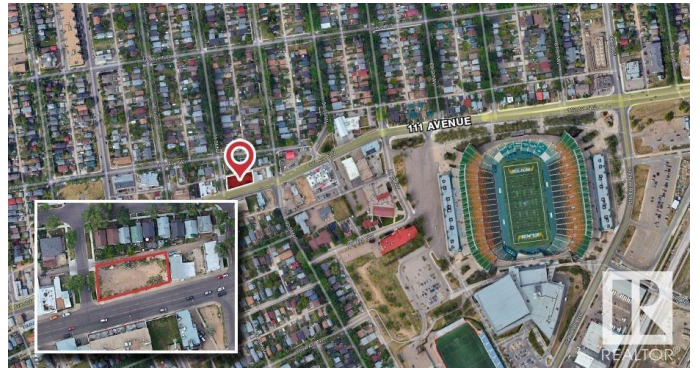
MLS® #E4415775

\$550,000

0 Bedroom, 0.00 Bathroom,
Land Commercial on 0.00 Acres

Alberta Avenue, Edmonton, AB

Prime corner location with visibility from over 15,803 vehicles daily along 111 Avenue west of 93 Street (2023 City of Edmonton). Close to Commonwealth Stadium, Kingsway Mall, Royal Alexandra Hospital, and NAIT. Suitable for multifamily, mixed-use, daycare, or medical development.



Essential Information

MLS® #	E4415775
Price	\$550,000
Bathrooms	0.00
Acres	0.00
Type	Land Commercial
Status	Active

Community Information

Address	9232 111 Avenue
Area	Edmonton
Subdivision	Alberta Avenue
City	Edmonton
County	ALBERTA
Province	AB
Postal Code	T5G 0A1

Additional Information

Date Listed	December 11th, 2024
-------------	---------------------

Days on Market 137

Zoning Zone 05

DATA IS DEEMED RELIABLE BUT IS NOT GUARANTEED ACCURATE BY THE REALTORS® ASSOCIATION OF EDMONTON. COPYRIGHT 2025 BY THE REALTORS® ASSOCIATION OF EDMONTON. ALL RIGHTS RESERVED. Trademarks are owned or controlled by the Canadian Real Estate Association (CREA) and identify real estate professionals who are members of CREA (REALTOR®, REALTORS®) and/or the quality of services they provide (MLS®, Multiple Listing Service®)

Listing information last updated on April 27th, 2025 at 1:32am MDT