

Courtesy Of Keith B Madsen Of MaxWell Progressive

## \$219,900 - 202 7711 71 Street, Edmonton

MLS® #E4424860

**\$219,900**

2 Bedroom, 2.00 Bathroom, 825 sqft  
Condo / Townhouse on 0.00 Acres

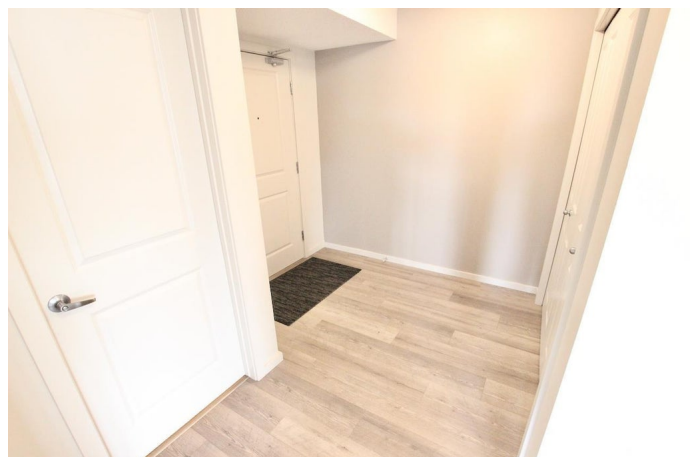
King Edward Park, Edmonton, AB

2 BED 2 FULL BATH SOUTH FACING CORNER UNIT W/ TITLED UNDERGROUND PARKING in Elements at Urban Village! This immaculate 2nd floor unit is sure to please with its open concept floor plan, granite countertops, modern cabinets, stainless steel appliances, IN-SUITE LAUNDRY, and so much more! This unit has the perfect floor plan with the bedrooms separated by the living area and south facing so it gets loads of natural light from dusk till dawn with all the extra windows! Outside also boasts a huge wrap around covered balcony! Close to all the amenities you'd need and a great location for commuting all around the city! Don't miss out on this great unit!

Built in 2017

### Essential Information

MLS® #	E4424860
Price	\$219,900
Bedrooms	2
Bathrooms	2.00
Full Baths	2
Square Footage	825
Acres	0.00
Year Built	2017
Type	Condo / Townhouse



Sub-Type	Lowrise Apartment
Style	Single Level Apartment
Status	Active

### Community Information

Address	202 7711 71 Street
Area	Edmonton
Subdivision	King Edward Park
City	Edmonton
County	ALBERTA
Province	AB
Postal Code	T6B 3W3

### Amenities

Amenities	Deck, Parking-Visitor, Storage-In-Suite, Storage Cage
Parking	Underground

### Interior

Interior Features	ensuite bathroom
Appliances	Dishwasher-Built-In, Microwave Hood Fan, Refrigerator, Stacked Washer/Dryer, Stove-Electric
Heating	Baseboard, Natural Gas
# of Stories	4
Stories	1
Has Basement	Yes
Basement	None, No Basement

### Exterior

Exterior	Wood, Brick, Vinyl
Exterior Features	Public Transportation, Schools, Shopping Nearby
Roof	Asphalt Shingles
Construction	Wood, Brick, Vinyl
Foundation	Concrete Perimeter

### Additional Information

Date Listed	March 9th, 2025
Days on Market	3
Zoning	Zone 17
Condo Fee	\$473

DATA IS DEEMED RELIABLE BUT IS NOT GUARANTEED ACCURATE BY THE REALTORS® ASSOCIATION OF EDMONTON. COPYRIGHT 2025 BY THE REALTORS® ASSOCIATION OF EDMONTON. ALL RIGHTS RESERVED. Trademarks are owned or controlled by the Canadian Real Estate Association (CREA) and identify real estate professionals who are members of CREA (REALTOR®, REALTORS®) and/or the quality of services they provide (MLS®, Multiple Listing Service®)

Listing information last updated on March 12th, 2025 at 8:02pm MDT