

\$621,748 - 91 Elsinore Place, Edmonton

MLS® #E4428171

\$621,748

3 Bedroom, 2.50 Bathroom, 2,170 sqft

Single Family on 0.00 Acres

Elsinore, Edmonton, AB

Welcome to the Entertain gather built by Cantiro Homes is guaranteed to impress you. Located in the beautiful and highly sought after community of Castlebrook, At 2169 square ft., this open floor plan has tons of natural light from the oversized windows and is the perfect place to entertain with a dining area that can seat 8. Main floor features a large family entrance with plenty of storage, half bathroom, tech space area perfect for a small home office. The stunning kitchen is complete with quartz countertops, stainless steel appliances, oversized island and a large walk through pantry. The upper level has a large central bonus room, primary suite complete with a large walk in closet, 5 piece ensuite complete with a free standing soaker tub, fully tiled shower. The second floor also comes with 2 secondary bedrooms, a laundry room & a 4 piece bathroom. *** Home is under construction and will be completed shortly the photos used from a previous built home same layout , colors and finishings may vary ***

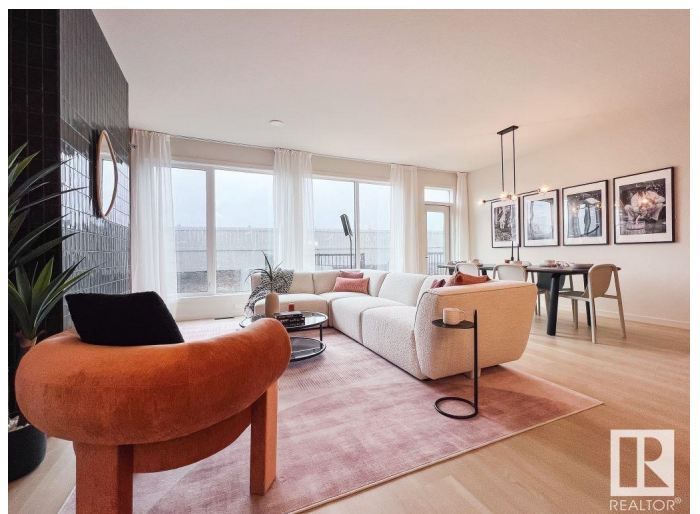
Built in 2024

Essential Information

MLS® # E4428171

Price \$621,748

Bedrooms 3



Bathrooms	2.50
Full Baths	2
Half Baths	1
Square Footage	2,170
Acres	0.00
Year Built	2024
Type	Single Family
Sub-Type	Detached Single Family
Style	2 Storey
Status	Active

Community Information

Address	91 Elsinore Place
Area	Edmonton
Subdivision	Elsinore
City	Edmonton
County	ALBERTA
Province	AB
Postal Code	T5X 5V7

Amenities

Amenities	See Remarks
Parking	Double Garage Detached

Interior

Appliances	Dishwasher-Built-In, Dryer, Garage Control, Garage Opener, Refrigerator, Washer
Heating	Forced Air-1, Natural Gas
Stories	2
Has Basement	Yes
Basement	Full, Unfinished

Exterior

Exterior	Wood, Stone, Vinyl
Exterior Features	Golf Nearby, Park/Reserve, Playground Nearby, Public Swimming Pool, Public Transportation, Schools, Shopping Nearby, See Remarks
Roof	Asphalt Shingles
Construction	Wood, Stone, Vinyl
Foundation	Concrete Perimeter

Additional Information

Date Listed	March 28th, 2025
Days on Market	32
Zoning	Zone 27

DATA IS DEEMED RELIABLE BUT IS NOT GUARANTEED ACCURATE BY THE REALTORS® ASSOCIATION OF EDMONTON. COPYRIGHT 2025 BY THE REALTORS® ASSOCIATION OF EDMONTON. ALL RIGHTS RESERVED.Trademarks are owned or controlled by the Canadian Real Estate Association (CREA) and identify real estate professionals who are members of CREA (REALTOR®, REALTORS®) and/or the quality of services they provide (MLS®, Multiple Listing Service®)

Listing information last updated on April 29th, 2025 at 8:02pm MDT