

Courtesy Of Timothy S Baker Of RE/MAX Edge Realty

# \$499,900 - 247 Savoy Crescent, Sherwood Park

MLS® #E4431686

**\$499,900**

3 Bedroom, 3.00 Bathroom, 1,841 sqft  
Single Family on 0.00 Acres

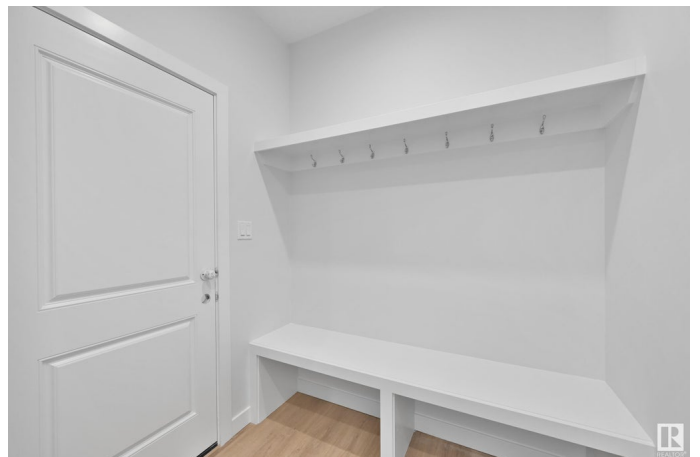
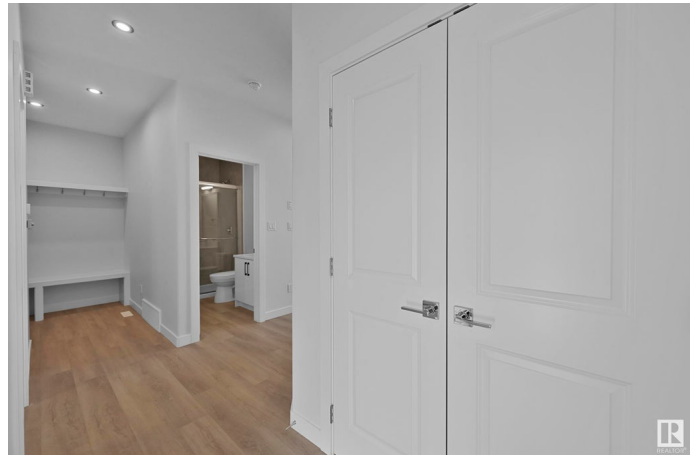
Summerwood, Sherwood Park, AB

Welcome to this stunning new build duplex in Sherwood Park, where contemporary design meets comfort and functionality! This home features 3 bedrooms, 3 bathrooms, and over 1841 sqft of stylish, open-concept living space. Enjoy a chef-inspired kitchen with a walk-in pantry, and an ample amount of cabinet and counter space. The main floor is bright and airy, with many windows, high ceilings and a cozy living space perfect for family time or entertaining guests. The main floor also features a versatile den as well as a 3-piece bathroom. Upstairs, the primary suite is a private retreat, complete with a walk-in closet and sleek ensuite. In addition to the primary you will find 2 more bedrooms as well as another 4-piece bathroom. Located close to parks, schools, and essential amenities, this is the perfect opportunity to get into a brand new home in a growing, family-friendly community.

Built in 2025

## Essential Information

MLS® #	E4431686
Price	\$499,900
Bedrooms	3
Bathrooms	3.00
Full Baths	3
Square Footage	1,841



Acres	0.00
Year Built	2025
Type	Single Family
Sub-Type	Half Duplex
Style	2 Storey
Status	Active

### **Community Information**

Address	247 Savoy Crescent
Area	Sherwood Park
Subdivision	Summerwood
City	Sherwood Park
County	ALBERTA
Province	AB
Postal Code	T8H 2Y4

### **Amenities**

Amenities	Ceiling 9 ft., See Remarks, 9 ft. Basement Ceiling
Parking Spaces	4
Parking	Double Garage Attached

### **Interior**

Interior Features	ensuite bathroom
Appliances	Garage Control, Garage Opener
Heating	Forced Air-1, Natural Gas
Fireplace	Yes
Fireplaces	Insert
Stories	2
Has Basement	Yes
Basement	Full, Unfinished

### **Exterior**

Exterior	Wood, Stone, Vinyl
Exterior Features	Public Transportation, Schools, Shopping Nearby, See Remarks
Roof	Asphalt Shingles
Construction	Wood, Stone, Vinyl
Foundation	Concrete Perimeter

### **School Information**

Elementary	Brentwood Elementary
Middle	Clover Bar Junior High
High	Bev Facey Community High

### **Additional Information**

Date Listed      April 18th, 2025

Days on Market    6

Zoning             Zone 25

DATA IS DEEMED RELIABLE BUT IS NOT GUARANTEED ACCURATE BY THE REALTORS® ASSOCIATION OF EDMONTON. COPYRIGHT 2025 BY THE REALTORS® ASSOCIATION OF EDMONTON. ALL RIGHTS RESERVED. Trademarks are owned or controlled by the Canadian Real Estate Association (CREA) and identify real estate professionals who are members of CREA (REALTOR®, REALTORS®) and/or the quality of services they provide (MLS®, Multiple Listing Service®)

Listing information last updated on April 24th, 2025 at 8:32am MDT