

\$750,000 - 66504 Rng Rd 141, Lac La Biche County

MLS® #A2074535

\$750,000

0 Bedroom, 0.00 Bathroom,
Land on 135.91 Acres

NONE, Lac La Biche County, Alberta

Location! Location! Location! Looking for an Investment Opportunity? Just off busy Hwy 55 has great potential for commercial or industrial development with 1/2 a mile of railway frontage. Power and Natural Gas are at the property line. Located near the Lac La Biche Sentential Industrial Park and the Deer Meadows Mobile Home Park. Have a Vision? Hereâ€™s your Chance to Diversify!

Essential Information

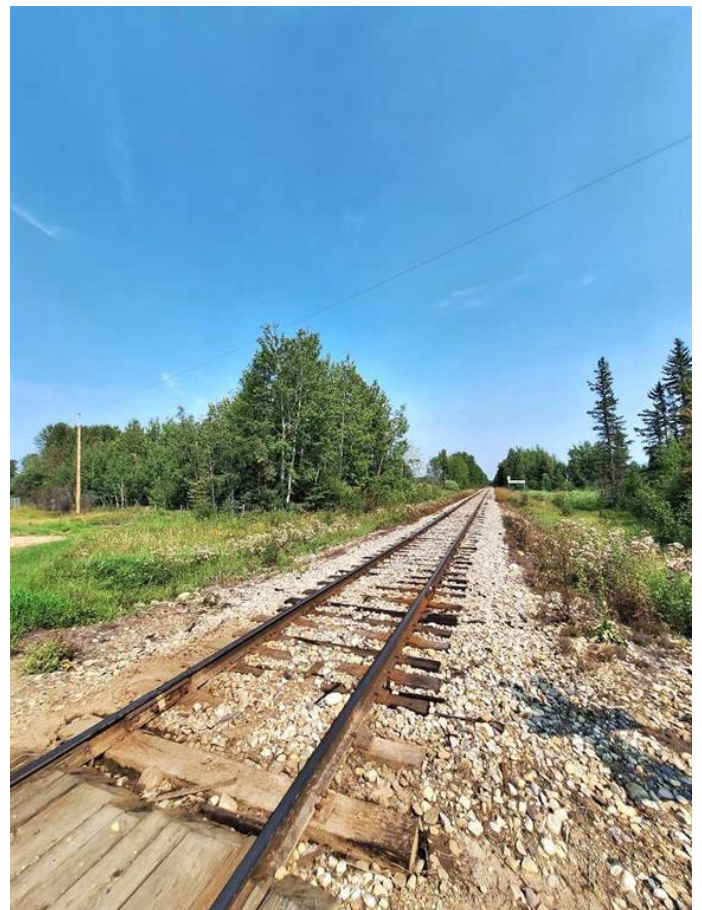
MLS® #	A2074535
Price	\$750,000
Bathrooms	0.00
Acres	135.91
Type	Land
Sub-Type	Residential Land
Status	Active

Community Information

Address	66504 Rng Rd 141
Subdivision	NONE
City	Lac La Biche County
County	Lac La Biche County
Province	Alberta
Postal Code	T0A 2C0

Additional Information

Date Listed	August 18th, 2023
-------------	-------------------



Days on Market 598
Zoning Agricultural

Listing Details

Listing Office RE/MAX LA BICHE REALTY

Data is supplied by Pillar 9â,,ç MLSÂ® System. Pillar 9â,,ç is the owner of the copyright in its MLSÂ® System. Data is deemed reliable but is not guaranteed accurate by Pillar 9â,,ç. The trademarks MLSÂ®, Multiple Listing ServiceÂ® and the associated logos are owned by The Canadian Real Estate Association (CREA) and identify the quality of services provided by real estate professionals who are members of CREA. Used under license.