

\$879,900 - 5912 50 Avenue, Lloydminster

MLS® #A2125071

\$879,900

0 Bedroom, 0.00 Bathroom,
Commercial on 1.00 Acres

Glen E. Neilsen Industrial Park, Lloydminster,
Alberta

Great investment opportunity! Highway 17 location featuring office/retail space. This building is 9,984 SQFT & sits on 1 acre of land with a fully fenced compound. The building can accommodate 4 independent spaces or one large office setting. This building is in excellent condition and also features an abundance of on-site parking, newer rooftop HVAC units. Excellent value to any investor!

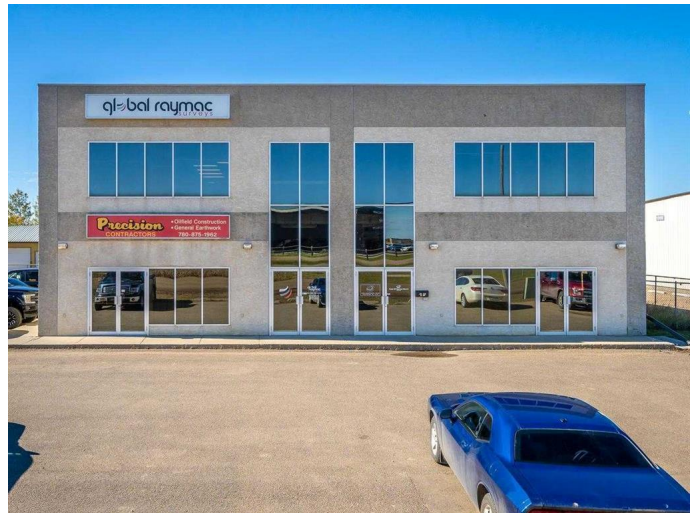
Built in 2001

Essential Information

MLS® #	A2125071
Price	\$879,900
Bathrooms	0.00
Acres	1.00
Year Built	2001
Type	Commercial
Sub-Type	Industrial
Status	Active

Community Information

Address	5912 50 Avenue
Subdivision	Glen E. Neilsen Industrial Pa
City	Lloydminster
County	Lloydminster
Province	Alberta
Postal Code	T9V 0W6



Exterior

Construction Wood Frame

Additional Information

Date Listed April 22nd, 2024

Days on Market 345

Zoning C5

Listing Details

Listing Office MUSGRAVE AGENCIES

Data is supplied by Pillar 9â„¸ MLSÂ® System. Pillar 9â„¸ is the owner of the copyright in its MLSÂ® System. Data is deemed reliable but is not guaranteed accurate by Pillar 9â„¸. The trademarks MLSÂ®, Multiple Listing ServiceÂ® and the associated logos are owned by The Canadian Real Estate Association (CREA) and identify the quality of services provided by real estate professionals who are members of CREA. Used under license.