

\$299,900 - 590034 Range Road 111a, Rural Woodlands County

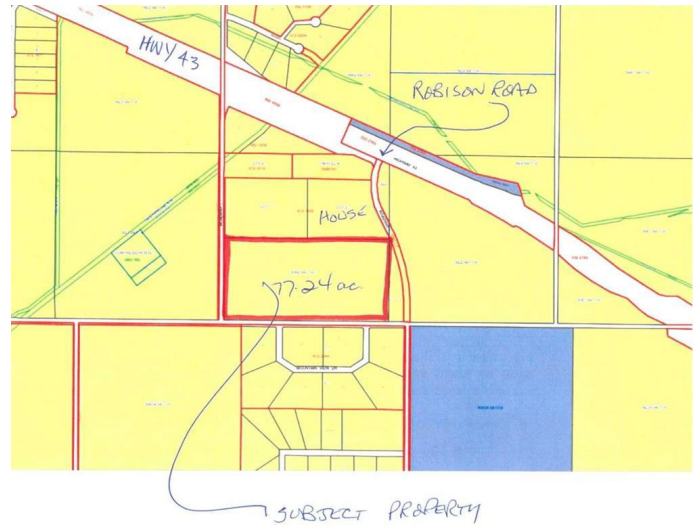
MLS® #A2151201

\$299,900

0 Bedroom, 0.00 Bathroom,
Land on 77.24 Acres

NONE, Rural Woodlands County, Alberta

This beautiful partially treed parcel is over 77 acres and yet it is only minutes from Whitecourt just down Robison Road. Services are nearby. Build your new home, subdivide, or a place for your horse and quading land. If you don't want to put a dwelling there then the house right next door to the North is for sale and it has 24.96 ac. so you could really be seclude and private but still close enough to all the town amenities.



Essential Information

MLS® #	A2151201
Price	\$299,900
Bathrooms	0.00
Acres	77.24
Type	Land
Sub-Type	Residential Land
Status	Active

Community Information

Address	590034 Range Road 111a
Subdivision	NONE
City	Rural Woodlands County
County	Woodlands County
Province	Alberta
Postal Code	T7S 1P2

Additional Information

Date Listed July 19th, 2024

Days on Market 253

Zoning Cr-1

Listing Details

Listing Office RE/MAX ADVANTAGE (WHITECOURT)

Data is supplied by Pillar 9â,,ç MLSÂ® System. Pillar 9â,,ç is the owner of the copyright in its MLSÂ® System. Data is deemed reliable but is not guaranteed accurate by Pillar 9â,,ç. The trademarks MLSÂ®, Multiple Listing ServiceÂ® and the associated logos are owned by The Canadian Real Estate Association (CREA) and identify the quality of services provided by real estate professionals who are members of CREA. Used under license.