

\$229,000 - On Range Road 7-2, Rural Clearwater County

MLS® #A2158964

\$229,000

0 Bedroom, 0.00 Bathroom,
Land on 4.99 Acres

NONE, Rural Clearwater County, Alberta

Location, Location, Location! This almost 5 acre parcel is close to town, gorgeous and private, located on a no exit road. Brand new perimeter fence and gate with some cross fencing. Utilities are all close by. The perfect spot for a dream home or weekend getaway spot. The CRA zoning keeps all the acreage options open and the band of trees on the north and east sides is ideal for privacy

Essential Information

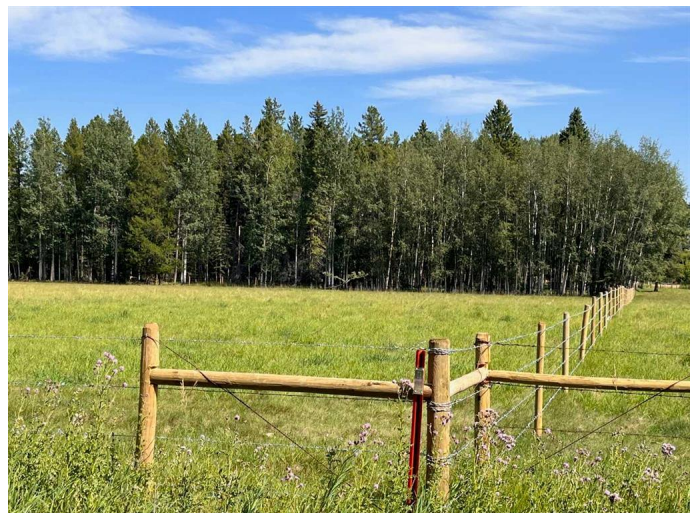
MLS® #	A2158964
Price	\$229,000
Bathrooms	0.00
Acres	4.99
Type	Land
Sub-Type	Residential Land
Status	Active

Community Information

Address	On Range Road 7-2
Subdivision	NONE
City	Rural Clearwater County
County	Clearwater County
Province	Alberta
Postal Code	T4T 2A3

Additional Information

Date Listed	August 19th, 2024
-------------	-------------------



Days on Market 226
Zoning CRA

Listing Details

Listing Office Century 21 Westcountry Realty Ltd.

Data is supplied by Pillar 9â„¢ MLSÂ® System. Pillar 9â„¢ is the owner of the copyright in its MLSÂ® System. Data is deemed reliable but is not guaranteed accurate by Pillar 9â„¢. The trademarks MLSÂ®, Multiple Listing ServiceÂ® and the associated logos are owned by The Canadian Real Estate Association (CREA) and identify the quality of services provided by real estate professionals who are members of CREA. Used under license.