

\$600,000 - 0 0, Winfield

MLS® #A2175223

\$600,000

0 Bedroom, 0.00 Bathroom,
Land on 158.06 Acres

NONE, Winfield, Alberta

Bare pasture quarter, ready for next year. Fenced and has had 30 pairs on this current year. There is evidence that some of the land has been cultivated in the past. There is a disused yard site in the NE corner of the property. Hard to find a quarter of land priced at this money.

Essential Information

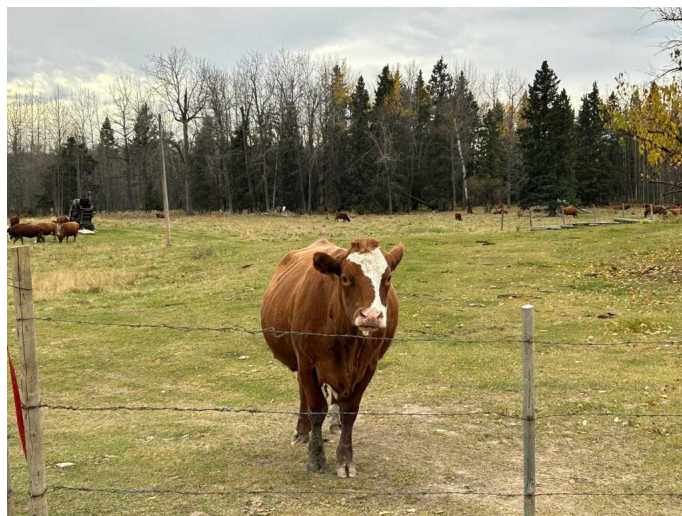
MLS® #	A2175223
Price	\$600,000
Bathrooms	0.00
Acres	158.06
Type	Land
Sub-Type	Commercial Land
Status	Active

Community Information

Address	0 0
Subdivision	NONE
City	Winfield
County	Wetaskiwin No. 10, County of
Province	Alberta
Postal Code	T4H 1B7

Additional Information

Date Listed	October 24th, 2024
Days on Market	160
Zoning	Ag



Listing Details

Listing Office Royal LePage Wildrose Real Estate -Olds

Data is supplied by Pillar 9â,,ç MLSÂ® System. Pillar 9â,,ç is the owner of the copyright in its MLSÂ® System. Data is deemed reliable but is not guaranteed accurate by Pillar 9â,,ç. The trademarks MLSÂ®, Multiple Listing ServiceÂ® and the associated logos are owned by The Canadian Real Estate Association (CREA) and identify the quality of services provided by real estate professionals who are members of CREA. Used under license.