

\$599,000 - Portion Of Ne 2 74 9 W6 & Nw 2 74 9 W6, La Glace

MLS® #A2175896

\$599,000

0 Bedroom, 0.00 Bathroom,
Agri-Business on 229.80 Acres

NONE, La Glace, Alberta

229.8+/- Acres on 2 titles selling together as 1 parcel, 100 acres more or less being farmed. 2024 crop was canola and hay.; The balance of acres are pasture, bush, creek and La Glace Lake shoreline. Excellent land for farming, pasture and recreation. Call your Realtor today for more information.

Essential Information

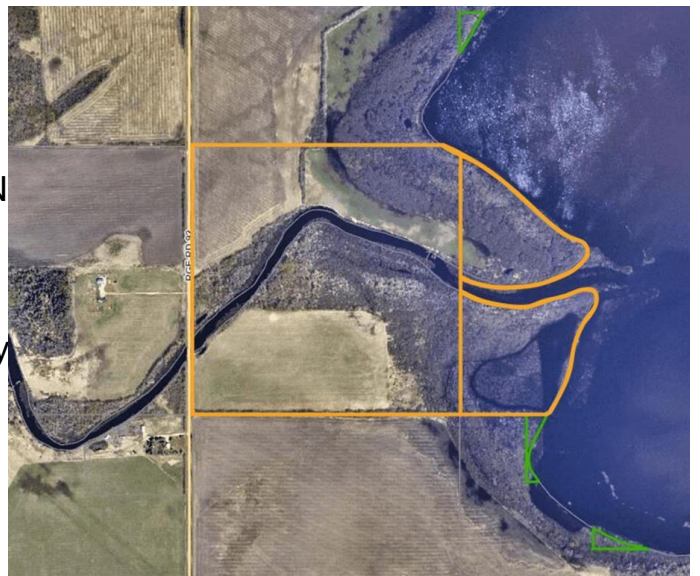
MLS® #	A2175896
Price	\$599,000
Bathrooms	0.00
Acres	229.80
Type	Agri-Business
Sub-Type	Agriculture
Status	Active

Community Information

Address	Portion Of Ne 2 74 9 W6 & N
Subdivision	NONE
City	La Glace
County	Grande Prairie No. 1, County
Province	Alberta
Postal Code	T0H 2J0

Additional Information

Date Listed	October 28th, 2024
Days on Market	159



Zoning AG

Listing Details

Listing Office All Peace Realty Ltd.

Data is supplied by Pillar 9â„¸ MLSÂ® System. Pillar 9â„¸ is the owner of the copyright in its MLSÂ® System. Data is deemed reliable but is not guaranteed accurate by Pillar 9â„¸. The trademarks MLSÂ®, Multiple Listing ServiceÂ® and the associated logos are owned by The Canadian Real Estate Association (CREA) and identify the quality of services provided by real estate professionals who are members of CREA. Used under license.