

# \$447,750 - 23 Barrier Mountain Drive, Exshaw

MLS® #A2176375

**\$447,750**

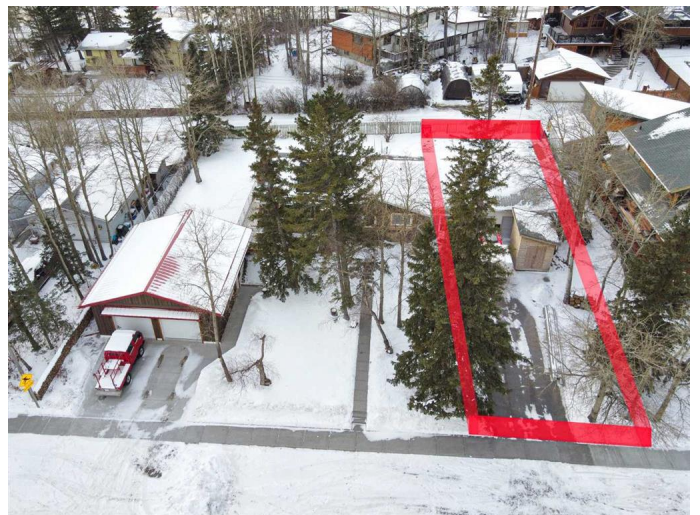
0 Bedroom, 0.00 Bathroom,  
Land on 0.11 Acres

NONE, Exshaw, Alberta

Nestled in the charming mountain hamlet of Exshaw, this prime lot offers an ideal setting for you to plan your mountain home. This 4,609 square foot lot has conditional approval from the MD and currently has a garage on the property until you are ready to build at which time you can decide if you would like to move it to another location on the lot. Surrounded by breathtaking natural beauty, this parcel provides stunning mountain views in all directions. With ample space to design and build, envision a cozy haven where you can enjoy crisp mornings and star-filled nights. This lot is the perfect canvas for creating a home that embodies mountain living at its finest. Other features of the lot include front street parking, a rear alley, south west facing rear yard, quiet neighbourhood, potential for legal suite or accessory short term rental, and the garage could be relocated by buyer to alley or seller can remove, no building commitment. Taxes are estimated. Your adventure awaits.

## Essential Information

MLS® #	A2176375
Price	\$447,750
Bathrooms	0.00
Acres	0.11
Type	Land
Sub-Type	Residential Land



Status Active

### Community Information

Address 23 Barrier Mountain Drive  
Subdivision NONE  
City Exshaw  
County Bighorn No. 8, M.D. of  
Province Alberta  
Postal Code T0L2C0

### Exterior

Lot Description Back Lane, See Remarks, Rectangular Lot

### Additional Information

Date Listed October 31st, 2024  
Days on Market 158  
Zoning r1

### Listing Details

Listing Office ROYAL LEPAGE SOLUTIONS

Data is supplied by Pillar 9â„¸ MLSÂ® System. Pillar 9â„¸ is the owner of the copyright in its MLSÂ® System. Data is deemed reliable but is not guaranteed accurate by Pillar 9â„¸. The trademarks MLSÂ®, Multiple Listing ServiceÂ® and the associated logos are owned by The Canadian Real Estate Association (CREA) and identify the quality of services provided by real estate professionals who are members of CREA. Used under license.