

\$599,000 - 1009, 2880 Main Street S, Airdrie

MLS® #A2181953

\$599,000

0 Bedroom, 0.00 Bathroom,
Commercial on 0.00 Acres

Sierra Springs, Airdrie, Alberta

This Premium Indoor Golf Simulator business in Airdrie offers an excellent opportunity for new owners, boasting strong sales and a loyal customer base. The facility is fully equipped with state-of-the-art premium indoor golf simulators, providing a premium golfing experience year-round. The business has shown impressive growth, making it an attractive investment for anyone looking to enter the recreational sports or entertainment industry.

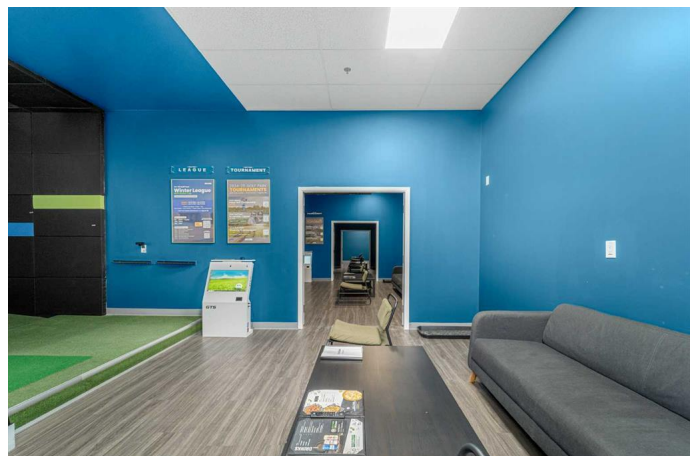
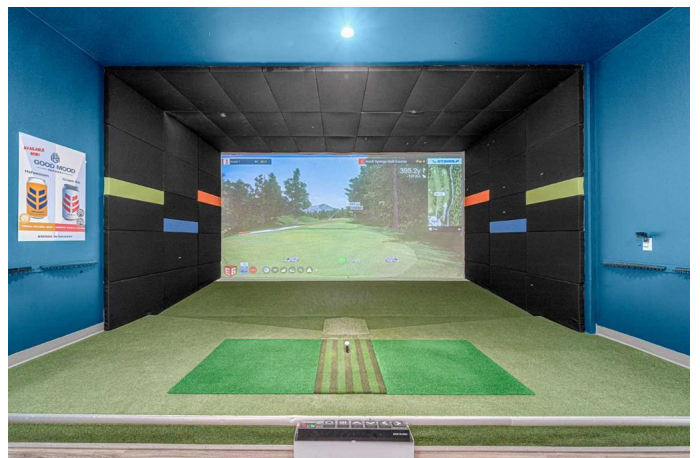
With affordable rent and low overhead costs, this business is well-positioned for continued profitability. The lease term is long, providing stability and security for future owners. The location benefits from high visibility and easy access, contributing to a steady flow of customers.

Whether you're an entrepreneur or an experienced business owner, this is an ideal turn-key operation with significant potential for expansion. Don't miss out on this rare opportunity in Airdrie's thriving market.

Built in 2021

Essential Information

MLS® #	A2181953
Price	\$599,000
Bathrooms	0.00



Acres	0.00
Year Built	2021
Type	Commercial
Sub-Type	Business
Status	Active

Community Information

Address	1009, 2880 Main Street S
Subdivision	Sierra Springs
City	Airdrie
County	Airdrie
Province	Alberta
Postal Code	T4B 3G4

Additional Information

Date Listed	December 4th, 2024
Days on Market	98

Listing Details

Listing Office	CIR Realty
----------------	------------

Data is supplied by Pillar 9â„¢ MLSÂ® System. Pillar 9â„¢ is the owner of the copyright in its MLSÂ® System. Data is deemed reliable but is not guaranteed accurate by Pillar 9â„¢. The trademarks MLSÂ®, Multiple Listing ServiceÂ® and the associated logos are owned by The Canadian Real Estate Association (CREA) and identify the quality of services provided by real estate professionals who are members of CREA. Used under license.