

\$8 - 205, 1601 Dunmore Road Se, Medicine Hat

MLS® #A2182435

\$8

0 Bedroom, 0.00 Bathroom,
Commercial on 0.00 Acres

Southview-Park Meadows, Medicine Hat,
Alberta

Centrally located second floor office space. This space has 3 good sized offices, all with large windows, Board room and open reception/waiting area (or could be used as bullpen office space). Beautiful View of park Behind and lots of natural light. Shared washrooms for the Tenants on the second floor. Operating costs \$6.78/sq ft (includes utilities)

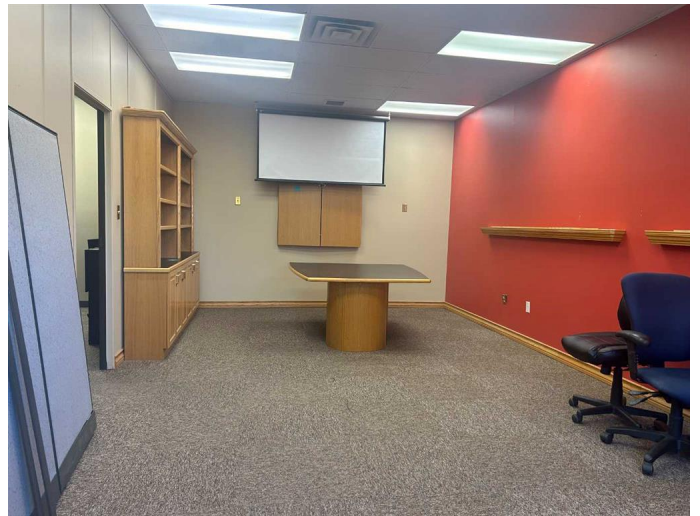
Built in 1980

Essential Information

| | |
|------------|------------|
| MLS® # | A2182435 |
| Price | \$8 |
| Bathrooms | 0.00 |
| Acres | 0.00 |
| Year Built | 1980 |
| Type | Commercial |
| Sub-Type | Office |
| Status | Active |

Community Information

| | |
|-------------|---------------------------|
| Address | 205, 1601 Dunmore Road Se |
| Subdivision | Southview-Park Meadows |
| City | Medicine Hat |
| County | Medicine Hat |
| Province | Alberta |
| Postal Code | T1A 1Z8 |



Additional Information

Date Listed January 12th, 2025

Days on Market 90

Listing Details

Listing Office RE/MAX MEDALTA REAL ESTATE

Data is supplied by Pillar 9â„¢ MLSÂ® System. Pillar 9â„¢ is the owner of the copyright in its MLSÂ® System. Data is deemed reliable but is not guaranteed accurate by Pillar 9â„¢. The trademarks MLSÂ®, Multiple Listing ServiceÂ® and the associated logos are owned by The Canadian Real Estate Association (CREA) and identify the quality of services provided by real estate professionals who are members of CREA. Used under license.