

\$224,900 - 10131 102 Avenue, Grande Prairie

MLS® #A2182522

\$224,900

0 Bedroom, 0.00 Bathroom,
Commercial on 0.09 Acres

Central Business District., Grande Prairie,
Alberta

Discover a rare opportunity in the heart of Grande Prairie—a 778-square-foot mixed-use commercial property perfectly positioned on 102 Avenue between Tim Horton's and Muskoseepi Park. This versatile property offers commercial upgrades, ample rear parking with alley access, and abundant street parking for clients. Wheelchair access at the front welcomes visitors into a functional main floor, making it an ideal choice for a small business/retail/message with the opportunity to have living quarters at the rear of the building. For more details or to arrange a viewing, contact your local Commercial Realtor®.

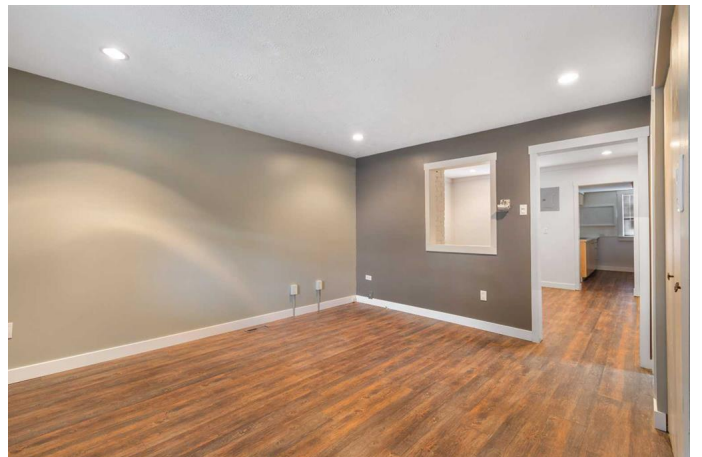
Built in 1940

Essential Information

| | |
|------------|------------|
| MLS® # | A2182522 |
| Price | \$224,900 |
| Bathrooms | 0.00 |
| Acres | 0.09 |
| Year Built | 1940 |
| Type | Commercial |
| Sub-Type | Mixed Use |
| Status | Active |

Community Information

| | |
|-------------|----------------------------|
| Address | 10131 102 Avenue |
| Subdivision | Central Business District. |



| | |
|-------------|----------------|
| City | Grande Prairie |
| County | Grande Prairie |
| Province | Alberta |
| Postal Code | T8V 0Z9 |

Additional Information

| | |
|----------------|-------------------|
| Date Listed | January 6th, 2025 |
| Days on Market | 108 |
| Zoning | CC |

Listing Details

| | |
|----------------|-----------------------|
| Listing Office | RE/MAX Grande Prairie |
|----------------|-----------------------|

Data is supplied by Pillar 9â„¸ MLSÂ® System. Pillar 9â„¸ is the owner of the copyright in its MLSÂ® System. Data is deemed reliable but is not guaranteed accurate by Pillar 9â„¸. The trademarks MLSÂ®, Multiple Listing ServiceÂ® and the associated logos are owned by The Canadian Real Estate Association (CREA) and identify the quality of services provided by real estate professionals who are members of CREA. Used under license.