

# \$1,100 - 338 24 Avenue Sw, Calgary

MLS® #A2183731

**\$1,100**

0 Bedroom, 0.00 Bathroom,  
Commercial on 0.10 Acres

Mission, Calgary, Alberta

Individual offices for rent \$1100 per month plus \$400 for wireless internet access, utilities and shared access to our common areas. Located downtown kitty corner to Earls Tin Palace.

Built in 1912

## Essential Information

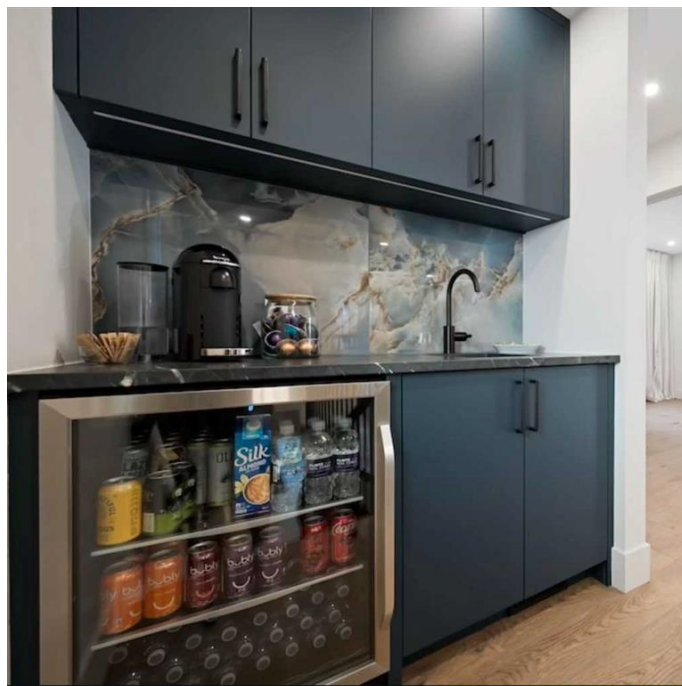
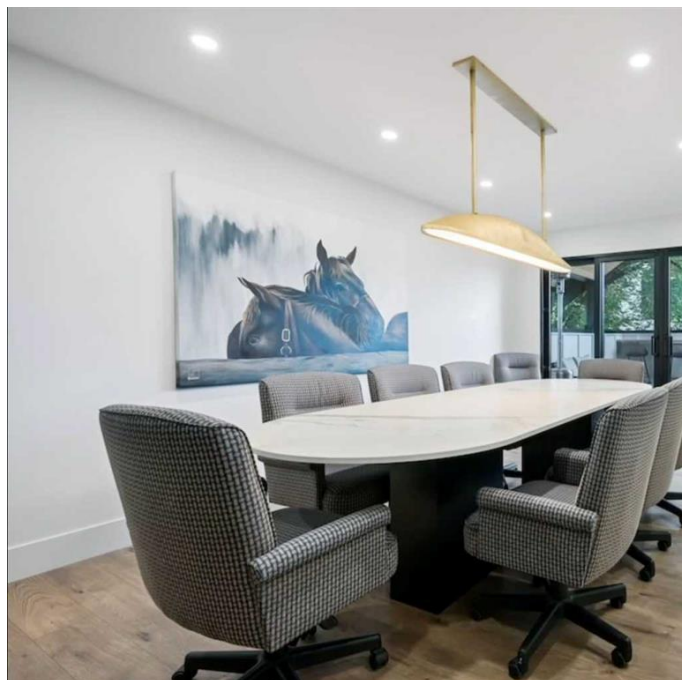
MLS® #	A2183731
Price	\$1,100
Bathrooms	0.00
Acres	0.10
Year Built	1912
Type	Commercial
Sub-Type	Office
Status	Active

## Community Information

Address	338 24 Avenue Sw
Subdivision	Mission
City	Calgary
County	Calgary
Province	Alberta
Postal Code	T2S 0K2

## Additional Information

Date Listed	December 23rd, 2024
Days on Market	100
Zoning	C-COR1



## Listing Details

Listing Office

Century 21 Masters

Data is supplied by Pillar 9â„¸ MLSÂ® System. Pillar 9â„¸ is the owner of the copyright in its MLSÂ® System. Data is deemed reliable but is not guaranteed accurate by Pillar 9â„¸. The trademarks MLSÂ®, Multiple Listing ServiceÂ® and the associated logos are owned by The Canadian Real Estate Association (CREA) and identify the quality of services provided by real estate professionals who are members of CREA. Used under license.