

# \$219,900 - 3107, 135c Sandpiper Road, Fort McMurray

MLS® #A2185143

**\$219,900**

2 Bedroom, 2.00 Bathroom, 960 sqft  
Residential on 0.00 Acres

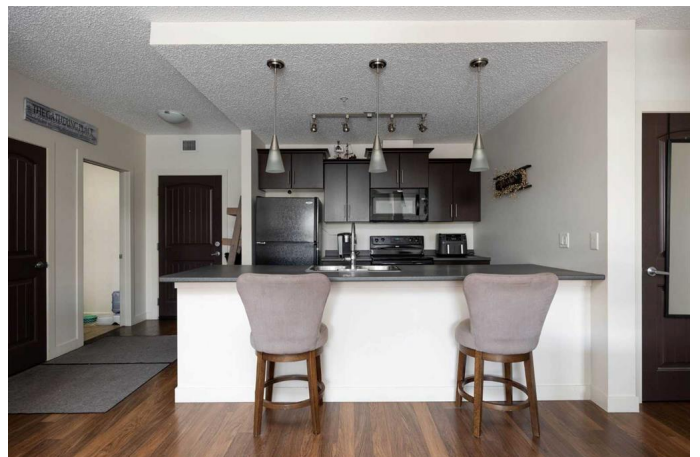
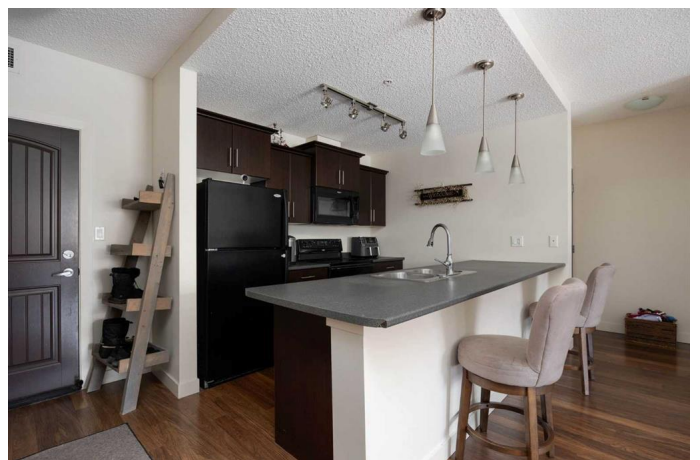
Eagle Ridge, Fort McMurray, Alberta

TANDEM UNDERGROUND HEATED PARKING STALL! GROUND LEVEL APARTMENT! IMMACULATE CONDITION!  
Welcome to 135C Sandpiper Road #3107. On the main level this property offers an open concept feel as the spacious kitchen that has ample cabinet and counter space looks onto the large living room that is sure to fit the entire family. The living room gives access to the private patio where you can find a gas bbq connection. The primary bedroom boasts a custom walk through closet, and a 4 PCE en suite bathroom. On the opposite side of this condo you will find the spacious spare bedroom, a 2nd 4 PCE bathroom, and in suite laundry and storage room. Check out the underground tandem heated stall (#311), and the separate storage unit (#530). Other features include a weight room that is steps away from the apartment, and a wash bay which is located close to the titled parking stall. Call now for your personal showing.

Built in 2009

## Essential Information

MLS® #	A2185143
Price	\$219,900
Bedrooms	2
Bathrooms	2.00
Full Baths	2
Square Footage	960



Acres	0.00
Year Built	2009
Type	Residential
Sub-Type	Apartment
Style	Apartment
Status	Active

### **Community Information**

Address	3107, 135c Sandpiper Road
Subdivision	Eagle Ridge
City	Fort McMurray
County	Wood Buffalo
Province	Alberta
Postal Code	T9K0N3

### **Amenities**

Amenities	Elevator(s), Park, Snow Removal, Trash, Visitor Parking
Parking Spaces	2
Parking	Underground

### **Interior**

Interior Features	Kitchen Island, No Smoking Home, See Remarks
Appliances	Dishwasher, Electric Stove, Microwave, Refrigerator, Washer/Dryer
Heating	Baseboard
Cooling	None
# of Stories	6

### **Exterior**

Exterior Features	Other
Construction	Concrete

### **Additional Information**

Date Listed	January 3rd, 2025
Days on Market	93
Zoning	R5

### **Listing Details**

Listing Office	ROYAL LEPAGE BENCHMARK
----------------	------------------------

Data is supplied by Pillar 9â„¢ MLSÂ® System. Pillar 9â„¢ is the owner of the copyright in its MLSÂ® System. Data is deemed reliable but is not guaranteed accurate by Pillar 9â„¢. The trademarks MLSÂ®, Multiple Listing ServiceÂ® and

the associated logos are owned by The Canadian Real Estate Association (CREA) and identify the quality of services provided by real estate professionals who are members of CREA. Used under license.