

\$649,900 - 253025 264 Range, Rural Wheatland County

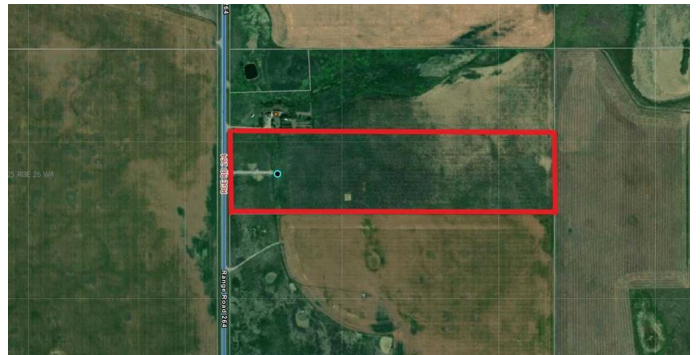
MLS® #A2187451

\$649,900

0 Bedroom, 0.00 Bathroom,
Land on 40.00 Acres

NONE, Rural Wheatland County, Alberta

Almost 40 acres of land in a prime location only 20 minutes from Calgary! No gravel road, only pavement access from Country Hills Blvd and Highway 1. Close to the Lyalta and close distance to Strathmore, Chestermere and Calgary. Also, very close to the upcoming De Havilland Field.



Essential Information

MLS® #	A2187451
Price	\$649,900
Bathrooms	0.00
Acres	40.00
Type	Land
Sub-Type	Residential Land
Status	Active

Community Information

Address	253025 264 Range
Subdivision	NONE
City	Rural Wheatland County
County	Wheatland County
Province	Alberta
Postal Code	T0J 1Y0

Exterior

Lot Description	Meadow, Native Plants
-----------------	-----------------------

Additional Information

Date Listed January 12th, 2025

Days on Market 82

Zoning AG

Listing Details

Listing Office Royal LePage Benchmark

Data is supplied by Pillar 9â,,ç MLSÂ® System. Pillar 9â,,ç is the owner of the copyright in its MLSÂ® System. Data is deemed reliable but is not guaranteed accurate by Pillar 9â,,ç. The trademarks MLSÂ®, Multiple Listing ServiceÂ® and the associated logos are owned by The Canadian Real Estate Association (CREA) and identify the quality of services provided by real estate professionals who are members of CREA. Used under license.