

\$144,900 - 102, 36078 Range Road 245a, Rural Red Deer County

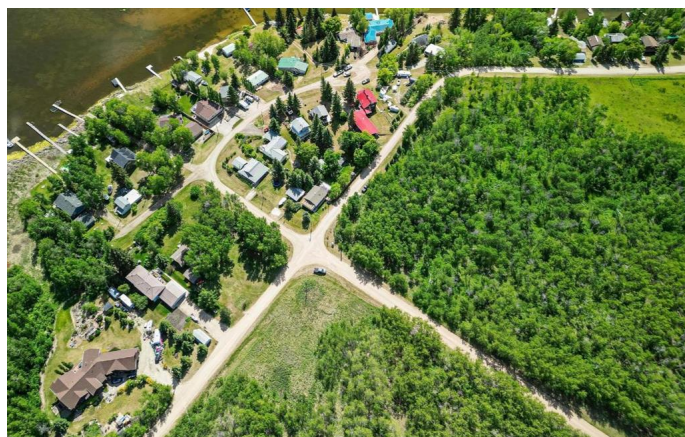
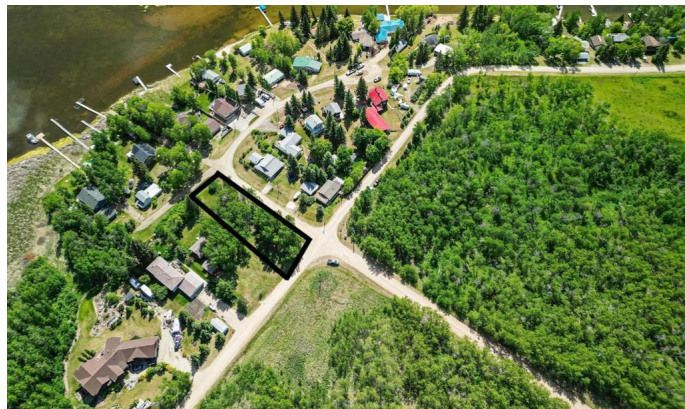
MLS® #A2191292

\$144,900

0 Bedroom, 0.00 Bathroom,
Land on 0.33 Acres

NONE, Rural Red Deer County, Alberta

Within 30 minutes of Red Deer, 1.5 hours from Calgary and a stone's throw to lake access, enjoy year round lake life at Pine Lake! This long narrow lake is a beautiful destination for fishing, boating, kayaking, swimming, golf and hiking. RARE FIND! Large corner lot and treed for privacy, it is the perfect location to take in the great outdoors! Whether recreation or year round use, build your cottage or dream home here!



Essential Information

MLS® #	A2191292
Price	\$144,900
Bathrooms	0.00
Acres	0.33
Type	Land
Sub-Type	Residential Land
Status	Active

Community Information

Address	102, 36078 Range Road 245
Subdivision	NONE
City	Rural Red Deer County
County	Red Deer County
Province	Alberta
Postal Code	T0M 1S0

Amenities



Utilities See Remarks

Additional Information

Date Listed February 1st, 2025

Days on Market 64

Zoning R6

Listing Details

Listing Office Maxwell Real Estate Solutions Ltd.

Data is supplied by Pillar 9â„¸ MLSÂ® System. Pillar 9â„¸ is the owner of the copyright in its MLSÂ® System. Data is deemed reliable but is not guaranteed accurate by Pillar 9â„¸. The trademarks MLSÂ®, Multiple Listing ServiceÂ® and the associated logos are owned by The Canadian Real Estate Association (CREA) and identify the quality of services provided by real estate professionals who are members of CREA. Used under license.