

\$350,000 - 173 Weiss Drive, Sapræe Creek

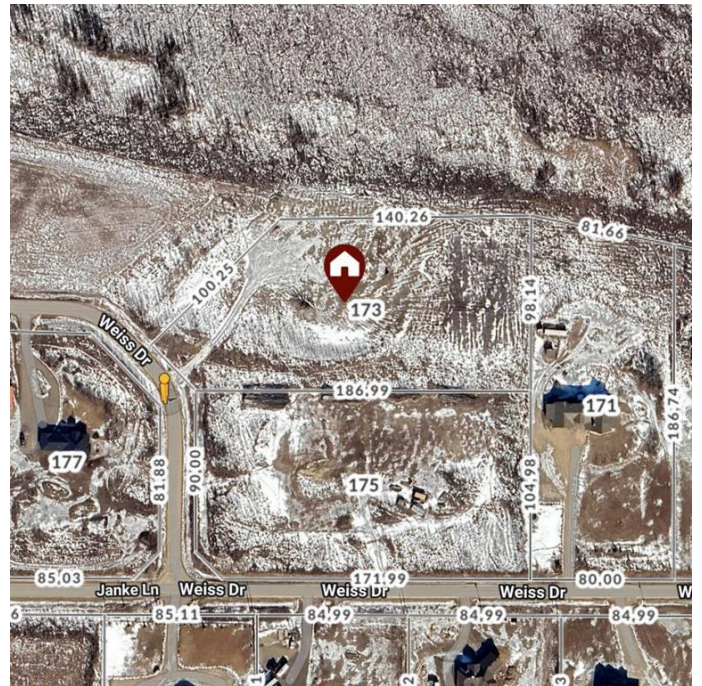
MLS® #A2196322

\$350,000

0 Bedroom, 0.00 Bathroom,
Land on 4.35 Acres

Sapræe Creek Estates, Sapræe Creek, Alberta

Ready to build? 173 Weiss Drive has 4.36 acres of land ready for you to build your dream home on! With a lot this size there is room for your house, garage (or 2) and even a barn for your horses and chickens! Seller will provide title insurance in lieu of a real property report.



Essential Information

MLS® #	A2196322
Price	\$350,000
Bathrooms	0.00
Acres	4.35
Type	Land
Sub-Type	Residential Land
Status	Active



Community Information

Address	173 Weiss Drive
Subdivision	Sapræe Creek Estates
City	Sapræe Creek
County	Wood Buffalo
Province	Alberta
Postal Code	T9H 5B4

Additional Information

Date Listed	February 24th, 2025
Days on Market	37
Zoning	SE

Listing Details



Listing Office

People 1st Realty

Data is supplied by Pillar 9â„¸ MLSÂ® System. Pillar 9â„¸ is the owner of the copyright in its MLSÂ® System. Data is deemed reliable but is not guaranteed accurate by Pillar 9â„¸. The trademarks MLSÂ®, Multiple Listing ServiceÂ® and the associated logos are owned by The Canadian Real Estate Association (CREA) and identify the quality of services provided by real estate professionals who are members of CREA. Used under license.