

\$299,900 - 33, 298 Somerset Way Se, Medicine Hat

MLS® #A2203850

\$299,900

2 Bedroom, 2.00 Bathroom, 1,285 sqft
Residential on 0.00 Acres

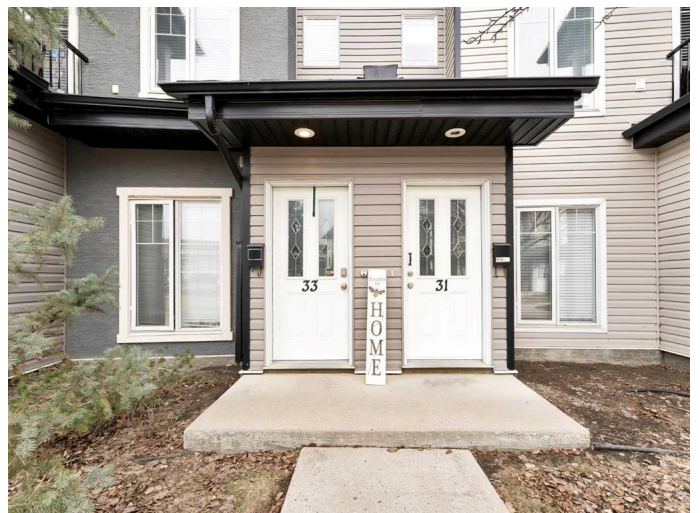
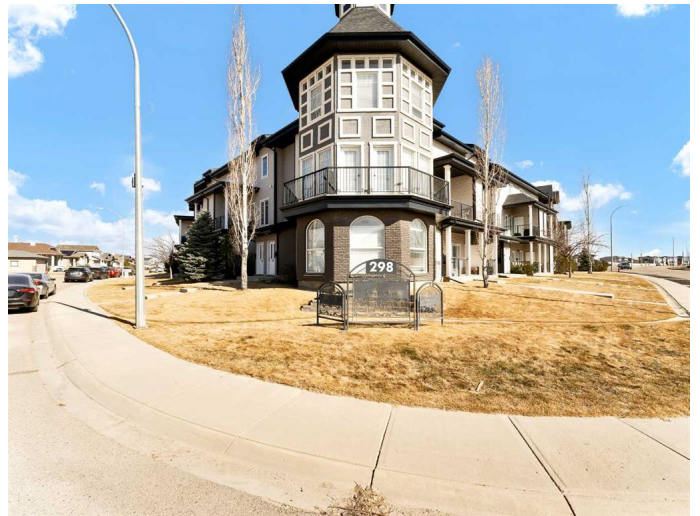
Southland, Medicine Hat, Alberta

Don't miss out on this incredible opportunity, perfect for both investors or first-time homebuyers! This pristine 1285 square foot condo is in impeccable condition and ideally located in the heart of the desirable Southland neighborhood, offering easy access to shopping, schools, parks, playgrounds, walking paths, and much more. The main level features a generous living room and dining area, complemented by a spacious kitchen with sleek granite countertops, ample cabinet space, and a convenient pantry. Step outside onto the charming deck, an ideal space for relaxing, with the added benefit of extra storage. A well-placed 2-piece bathroom completes the main level, offering ultimate convenience. Upstairs, you'll find a large primary bedroom, a second spacious bedroom, a full 4-piece bathroom, and a dedicated laundry room. Enjoy affordable, maintenance-free living at its best—schedule your showing today!

Built in 2007

Essential Information

MLS® #	A2203850
Price	\$299,900
Bedrooms	2
Bathrooms	2.00
Full Baths	1
Half Baths	1



Square Footage	1,285
Acres	0.00
Year Built	2007
Type	Residential
Sub-Type	Row/Townhouse
Style	2 Storey
Status	Active

Community Information

Address	33, 298 Somerset Way Se
Subdivision	Southland
City	Medicine Hat
County	Medicine Hat
Province	Alberta
Postal Code	T1B0E9

Amenities

Amenities	Fitness Center
Parking Spaces	1
Parking	Stall

Interior

Interior Features	Open Floorplan, Pantry
Appliances	Dishwasher, Dryer, Refrigerator, Stove(s), Washer, Window Coverings
Heating	Forced Air
Cooling	Central Air
Basement	None

Exterior

Exterior Features	Balcony, Other, Storage
Lot Description	Other
Roof	Asphalt Shingle
Construction	Brick, Mixed, Vinyl Siding
Foundation	Poured Concrete

Additional Information

Date Listed	March 21st, 2025
Days on Market	13
Zoning	R-MD

Listing Details

Listing Office SOURCE 1 REALTY CORP.

Data is supplied by Pillar 9â,,ç MLSÂ® System. Pillar 9â,,ç is the owner of the copyright in its MLSÂ® System. Data is deemed reliable but is not guaranteed accurate by Pillar 9â,,ç. The trademarks MLSÂ®, Multiple Listing ServiceÂ® and the associated logos are owned by The Canadian Real Estate Association (CREA) and identify the quality of services provided by real estate professionals who are members of CREA. Used under license.