

\$294,900 - 46 Dorothy Gentleman Crescent N, Lethbridge

MLS® #A2206348

\$294,900

2 Bedroom, 1.00 Bathroom, 918 sqft
Residential on 0.06 Acres

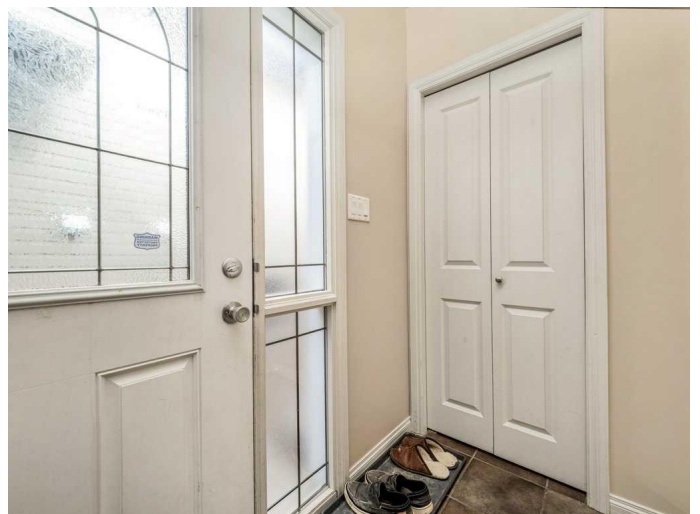
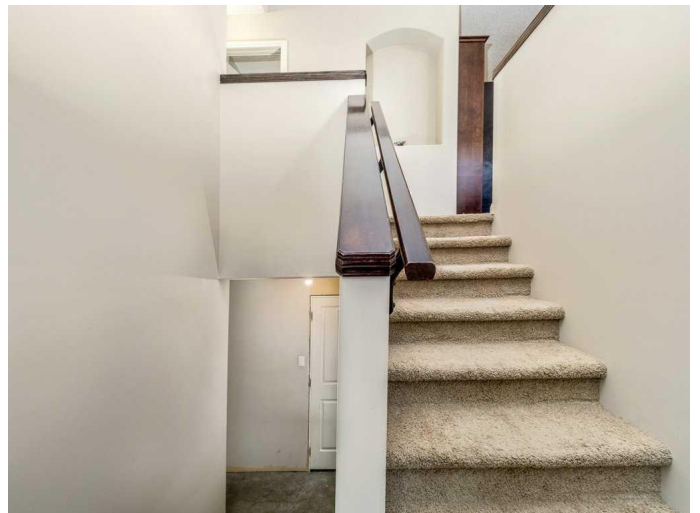
Legacy Ridge / Hardieville, Lethbridge, Alberta

Excellent starter home in a great north side location. Close to shopping, school, parks and playgrounds. Great view of Legacy Park from the back of this property. Home features 2 bedrooms, great kitchen with extra cabinet, good size dining and livingroom. Bathroom has tile floor and a jetted tub/shower. Basement is open for your future development/great storage for now. Air conditioning was added in the summer of 2024 and updated hot water tank approximately 3 years, south side of roof redone. Would be an amazing place to call home.

Built in 2007

Essential Information

MLS® #	A2206348
Price	\$294,900
Bedrooms	2
Bathrooms	1.00
Full Baths	1
Square Footage	918
Acres	0.06
Year Built	2007
Type	Residential
Sub-Type	Semi Detached
Style	Side by Side, Bi-Level
Status	Active



Community Information

Address	46 Dorothy Gentleman Crescent N
Subdivision	Legacy Ridge / Hardieville
City	Lethbridge
County	Lethbridge
Province	Alberta
Postal Code	T1H 5N8

Amenities

Parking Spaces	1
Parking	Off Street

Interior

Interior Features	Jetted Tub
Appliances	Central Air Conditioner, Dishwasher, Electric Range, Microwave, Range Hood, Refrigerator, Window Coverings
Heating	Forced Air, Natural Gas
Cooling	Central Air
Has Basement	Yes
Basement	Full, Unfinished

Exterior

Exterior Features	Private Yard
Lot Description	Landscaped, Rectangular Lot
Roof	Asphalt Shingle
Construction	Vinyl Siding, Wood Frame
Foundation	Poured Concrete

Additional Information

Date Listed	March 27th, 2025
Days on Market	7
Zoning	R-37

Listing Details

Listing Office	SUTTON GROUP - LETHBRIDGE
----------------	---------------------------

Data is supplied by Pillar 9â„¢ MLSÂ® System. Pillar 9â„¢ is the owner of the copyright in its MLSÂ® System. Data is deemed reliable but is not guaranteed accurate by Pillar 9â„¢. The trademarks MLSÂ®, Multiple Listing ServiceÂ® and the associated logos are owned by The Canadian Real Estate Association (CREA) and identify the quality of services provided by real estate professionals who are members of CREA. Used under license.