

\$584,900 - 131 Riverland Close W, Lethbridge

MLS® #A2207110

\$584,900

4 Bedroom, 4.00 Bathroom, 1,805 sqft
Residential on 0.12 Acres

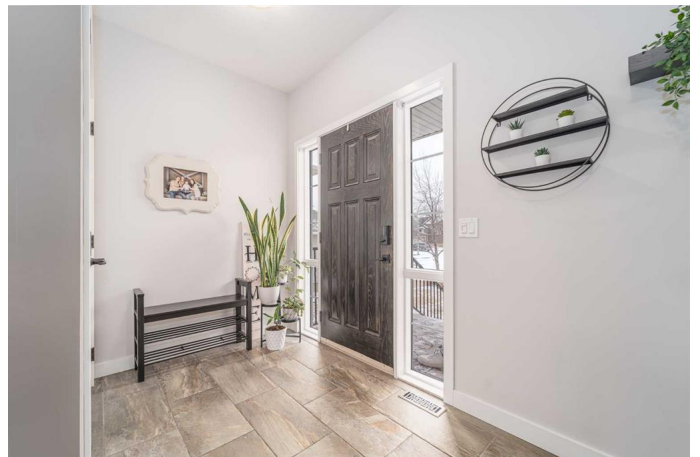
Riverstone, Lethbridge, Alberta

Welcome to this stunning two-level home, nestled in the tranquil and highly sought-after neighborhood of Riverstone, just moments away from the serene river valley, local parks, schools, and a charming pond. This beautiful property boasts modern features throughout, offering both comfort and style for a growing family.

The open floor plan creates a bright and inviting atmosphere, perfect for everyday living and entertaining. The living room is centered around a cozy gas fireplace, ideal for those chilly evenings. The spacious kitchen is a chef's dream, featuring a large pantry and plenty of counter space for meal preparation. The flooring on this level was recently updated and included is exterior lighting in the eaves controlled via an app.

Conveniently located, the garage opens directly into a spacious laundry room, adding to the home's functionality. Upstairs, the master bedroom is a true retreat, complete with a large ensuite and a walk-in closet, offering both luxury and privacy. Two additional well-sized bedrooms share a full bathroom, perfect for family or guests.

The fully finished basement adds even more living space, with a large rec room and an additional bedroom and bathroom, perfect for entertaining or accommodating visitors.



Step outside into the private backyard, offering a generous space for outdoor activities or relaxation. Included is a play structure so you can keep an eye on your little ones, and the alley access provides even more privacy from your back neighbours. This home is truly a perfect blend of modern living and a peaceful, family-friendly location.

Built in 2012

Essential Information

| | |
|----------------|-------------|
| MLS® # | A2207110 |
| Price | \$584,900 |
| Bedrooms | 4 |
| Bathrooms | 4.00 |
| Full Baths | 3 |
| Half Baths | 1 |
| Square Footage | 1,805 |
| Acres | 0.12 |
| Year Built | 2012 |
| Type | Residential |
| Sub-Type | Detached |
| Style | 2 Storey |
| Status | Active |

Community Information

| | |
|-------------|-----------------------|
| Address | 131 Riverland Close W |
| Subdivision | Riverstone |
| City | Lethbridge |
| County | Lethbridge |
| Province | Alberta |
| Postal Code | T1K 5T5 |

Amenities

| | |
|----------------|------------------------|
| Parking Spaces | 4 |
| Parking | Double Garage Attached |
| # of Garages | 2 |

Interior

| | |
|-------------------|--|
| Interior Features | Central Vacuum, Walk-In Closet(s) |
| Appliances | Dishwasher, Microwave Hood Fan, Refrigerator, Stove(s), Washer/Dryer |
| Heating | Forced Air, Natural Gas |
| Cooling | Central Air |
| Fireplace | Yes |
| # of Fireplaces | 1 |
| Fireplaces | Gas, Living Room |
| Has Basement | Yes |
| Basement | Finished, Full |

Exterior

| | |
|-------------------|--|
| Exterior Features | Private Yard |
| Lot Description | Back Lane, Back Yard, Few Trees, Landscaped, Standard Shaped Lot |
| Roof | Asphalt Shingle |
| Construction | Concrete, Vinyl Siding, Wood Frame |
| Foundation | Poured Concrete |

Additional Information

| | |
|----------------|------------------|
| Date Listed | March 31st, 2025 |
| Days on Market | 4 |
| Zoning | R-L |

Listing Details

| | |
|----------------|-------------|
| Listing Office | REAL BROKER |
|----------------|-------------|

Data is supplied by Pillar 9â„¸ MLSÂ® System. Pillar 9â„¸ is the owner of the copyright in its MLSÂ® System. Data is deemed reliable but is not guaranteed accurate by Pillar 9â„¸. The trademarks MLSÂ®, Multiple Listing ServiceÂ® and the associated logos are owned by The Canadian Real Estate Association (CREA) and identify the quality of services provided by real estate professionals who are members of CREA. Used under license.