

# \$599,900 - 232 Chelsea Manor, Chestermere

MLS® #A2210418

**\$599,900**

3 Bedroom, 3.00 Bathroom, 1,368 sqft  
Residential on 0.08 Acres

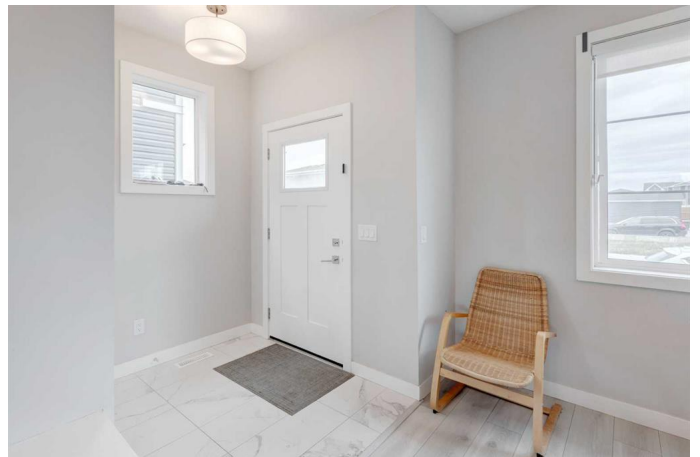
Chelsea\_CH, Chestermere, Alberta

Welcome to luxury living in this 2-storey TRUMAN built home located in the highly sought-after neighborhood of Chelsea in Chestermere. This home is in a prime location and close to numerous amenities. The area will soon feature a new school and a commercial plaza. The main level features a spacious and inviting living room ideal for entertaining guests or cozy family evenings. Adjacent to the living room is a formal and inviting dining area. From your dining room you have your open concept kitchen, featuring an abundance of cabinets, quartz countertops, stainless steel appliances and pantry. Off your kitchen you have a nice mudroom and access to your backyard and garage. As you move upstairs, discover the private primary bedroom with a 4 piece ensuite and walk in closet, 2 additional spacious bedrooms, 4 piece main bath, upper-level laundry and vinyl flooring throughout. Don't miss out on the chance to own this beautiful home.

Built in 2022

## Essential Information

MLS® #	A2210418
Price	\$599,900
Bedrooms	3
Bathrooms	3.00
Full Baths	2
Half Baths	1



Square Footage	1,368
Acres	0.08
Year Built	2022
Type	Residential
Sub-Type	Detached
Style	2 Storey
Status	Active

### **Community Information**

Address	232 Chelsea Manor
Subdivision	Chelsea_CH
City	Chestermere
County	Chestermere
Province	Alberta
Postal Code	T1X0L3

### **Amenities**

Parking Spaces	2
Parking	Double Garage Detached
# of Garages	2

### **Interior**

Interior Features	Bathroom Rough-in, Kitchen Island, No Animal Home, No Smoking Home, Open Floorplan, Quartz Counters, Vinyl Windows, Walk-In Closet(s)
Appliances	Dishwasher, Electric Stove, Garage Control(s), Microwave Hood Fan, Refrigerator, Washer/Dryer Stacked, Window Coverings
Heating	Forced Air, Natural Gas
Cooling	None
Has Basement	Yes
Basement	Full, Unfinished

### **Exterior**

Exterior Features	None
Lot Description	Back Lane, City Lot, Level
Roof	Asphalt Shingle
Construction	Brick, Vinyl Siding, Wood Frame
Foundation	Poured Concrete

### **Additional Information**

Date Listed April 11th, 2025

Days on Market 12

Zoning R-1

## **Listing Details**

Listing Office Nineteen 88 Real Estate

Data is supplied by Pillar 9â,,ç MLSÂ® System. Pillar 9â,,ç is the owner of the copyright in its MLSÂ® System. Data is deemed reliable but is not guaranteed accurate by Pillar 9â,,ç. The trademarks MLSÂ®, Multiple Listing ServiceÂ® and the associated logos are owned by The Canadian Real Estate Association (CREA) and identify the quality of services provided by real estate professionals who are members of CREA. Used under license.