

# \$645,000 - 226 Chelsea Heath Se, Chestermere

MLS® #A2214426

## \$645,000

3 Bedroom, 3.00 Bathroom, 1,620 sqft  
Residential on 0.08 Acres

Chelsea\_CH, Chestermere, Alberta

\*\*\*Stunning 3-Bedroom, 2.5-Bath Home with  
Tons of Upgrades & Large Lot\*\*\*

Located in a prime area close to parks, schools, and grocery stores, this beautifully upgraded 2022-built home offers approximately 1,650 sq. ft. of living space with an additional 3,300+ sq. ft. of traditional lot. With modern finishes and thoughtful upgrades by the current owner, this home combines comfort and style in every corner.

### Main Level Features:

Open-concept living and dining areas, perfect for entertaining

Upgraded kitchen with premium appliances, quartz countertops, and ample storage

Durable LVP flooring throughout, with ceramic tile accents

Convenient 2-piece bath for guests

Charming exterior with vinyl and stone finishes, along with front landscaping

Included: Central air conditioner and water softener for added convenience

### Upstairs Features:

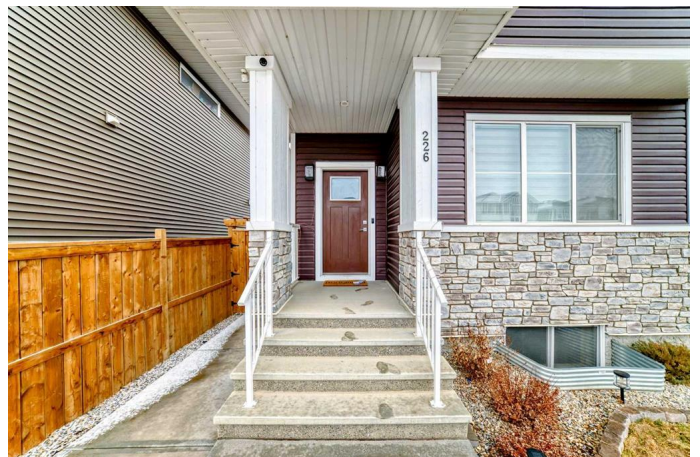
Spacious bonus room ideal for a home office or playroom

Master bedroom with large windows and a 3-piece ensuite

Two additional well-sized bedrooms with a second full bathroom

Laundry room for added convenience

### Additional Highlights:



Unfinished basement, offering endless potential for customization  
Fully landscaped, fenced backyard with a stamped concrete patioâ€”perfect for outdoor gatherings  
Oversized concrete parking pad for extra parking space  
This is a must-see home that combines modern amenities with thoughtful upgrades throughout. Donâ€™t miss the opportunity to own this beautiful property. Schedule your showing today!

Built in 2022

**Essential Information**

|                |             |
|----------------|-------------|
| MLS® #         | A2214426    |
| Price          | \$645,000   |
| Bedrooms       | 3           |
| Bathrooms      | 3.00        |
| Full Baths     | 2           |
| Half Baths     | 1           |
| Square Footage | 1,620       |
| Acres          | 0.08        |
| Year Built     | 2022        |
| Type           | Residential |
| Sub-Type       | Detached    |
| Style          | 2 Storey    |
| Status         | Active      |

**Community Information**

|             |                      |
|-------------|----------------------|
| Address     | 226 Chelsea Heath Se |
| Subdivision | Chelsea_CH           |
| City        | Chestermere          |
| County      | Chestermere          |
| Province    | Alberta              |
| Postal Code | T1X 1Z5              |

**Amenities**

|                |   |
|----------------|---|
| Parking Spaces | 2 |
|----------------|---|

|         |                         |
|---------|-------------------------|
| Parking | Parking Pad, Rear Drive |
|---------|-------------------------|

## Interior

|                   |   |
|-------------------|---|
| Interior Features | Chandelier, Kitchen Island, Pantry, Quartz Counters, Separate Entrance, Storage, Tray Ceiling(s), Walk-In Closet(s) |
| Appliances        | Central Air Conditioner, Dishwasher, Gas Range, Microwave, Refrigerator, Washer/Dryer Stacked, Window Coverings     |
| Heating           | Forced Air, Natural Gas   |
| Cooling           | Central Air, ENERGY STAR Qualified Equipment  |
| Fireplace         | Yes   |
| # of Fireplaces   | 1   |
| Fireplaces        | Electric, Living Room   |
| Has Basement      | Yes   |
| Basement          | Exterior Entry, See Remarks, Unfinished   |

## Exterior

|                   |                                    |
|-------------------|------------------------------------|
| Exterior Features | Private Yard                       |
| Lot Description   | Back Lane, Landscaped              |
| Roof              | Asphalt Shingle                    |
| Construction      | Concrete, Vinyl Siding, Wood Frame |
| Foundation        | Poured Concrete                    |

## Additional Information

|                |                  |
|----------------|------------------|
| Date Listed    | April 24th, 2025 |
| Days on Market | 5                |
| Zoning         | R1               |

## Listing Details

|                |            |
|----------------|------------|
| Listing Office | eXp Realty |
|----------------|------------|

Data is supplied by Pillar 9â„¢ MLSÂ® System. Pillar 9â„¢ is the owner of the copyright in its MLSÂ® System. Data is deemed reliable but is not guaranteed accurate by Pillar 9â„¢. The trademarks MLSÂ®, Multiple Listing ServiceÂ® and the associated logos are owned by The Canadian Real Estate Association (CREA) and identify the quality of services provided by real estate professionals who are members of CREA. Used under license.