

\$1,971,000 - 9801 102 Street, Clairmont

MLS® #GP213423

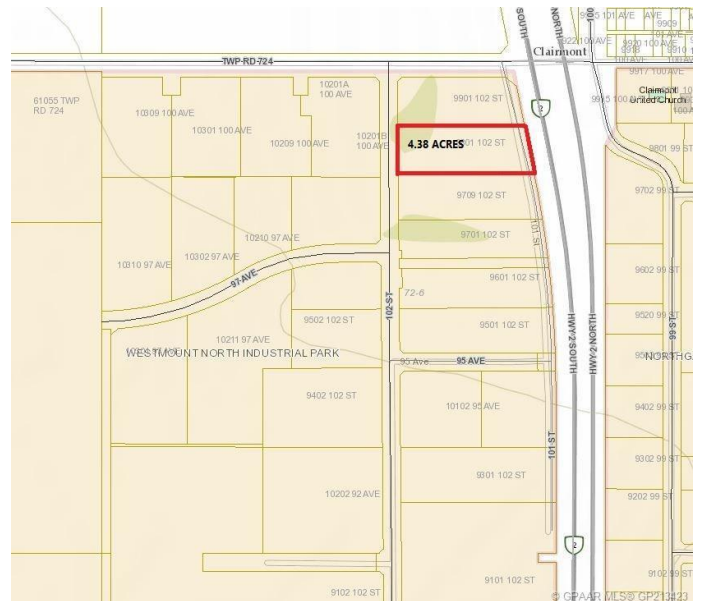
\$1,971,000

0 Bedroom, 0.00 Bathroom,

Land on 4.38 Acres

N/A, Clairmont, Alberta

4.38 Acres of Industrial Commercial Land located with exposure to HWY2 North. This lot is Zoned RM-4 Highway Industrial and is located adjacent to the New CO-OP Cardlock Station.



Essential Information

MLS® #	GP213423
Price	\$1,971,000
Bathrooms	0.00
Acres	4.38
Type	Land
Sub-Type	Land
Status	Active

Community Information

Address	9801 102 Street
Subdivision	N/A
City	Clairmont
County	Grande Prairie No. 1, County of
Province	Alberta
Postal Code	T0H 0W0

Additional Information

Date Listed	December 18th, 2019
Days on Market	1954
Zoning	RM-4

Listing Details



Listing Office

Tom Shields Realty Inc.

Data is supplied by Pillar 9â„¸ MLSÂ® System. Pillar 9â„¸ is the owner of the copyright in its MLSÂ® System. Data is deemed reliable but is not guaranteed accurate by Pillar 9â„¸. The trademarks MLSÂ®, Multiple Listing ServiceÂ® and the associated logos are owned by The Canadian Real Estate Association (CREA) and identify the quality of services provided by real estate professionals who are members of CREA. Used under license.